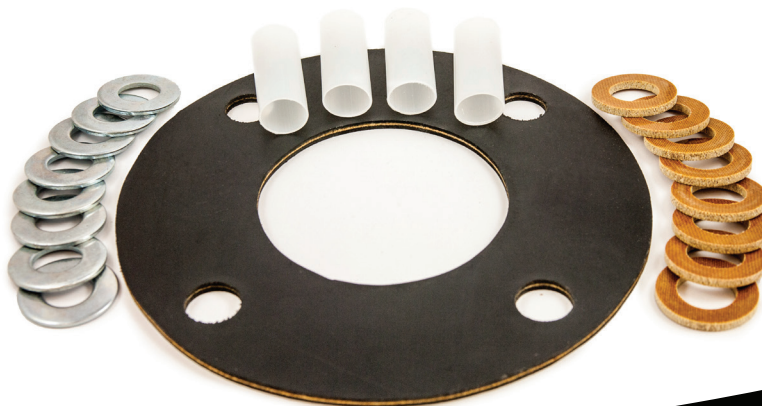




## Material Specifications for Insulation Kits

Each of the insulation kits contains insulating washers, steel zinc back up washers and sleeves for each bolt. (Insulating gaskets can be purchased separately or in the kits.)

<b>Sleeve Material:</b>	Polyethylene
<b>Temp. Limits:</b>	180oF
<b>Dielectric V/Mil:</b>	450
<b>Water Absorption:</b>	0.01%
<b>Insulating Washer Material:</b>	CE Grade Phenolic
<b>Temp. Limits:</b>	225oF (-100o F)
<b>Dielectric V/Mil:</b>	400-500
<b>Water Absorption:</b>	1.10%
<b>Backing Washer Material:</b>	SAE Electro-plated



V1117